

Release Notes

for

Dassault Systèmes SOLIDWORKS PDM Professional

Valid for product version: 2024 SP3.0 (2024.3.0)

Published: 13.06.2024 | Build: 592 | Revision: cc620ad93

Legal information

© 1995-2024, Dassault Systèmes SolidWorks Corporation, a Dassault Systèmes SE company, 175 Wyman Street, Waltham, Mass. 02451 USA. All Rights Reserved.

The information and the software discussed in this document are subject to change without notice and are not commitments by Dassault Systèmes SolidWorks Corporation (DS SolidWorks).

No material may be reproduced or transmitted in any form or by any means, electronically or manually, for any purpose without the express written permission of DS SolidWorks.

The software discussed in this document is furnished under a license and may be used or copied only in accordance with the terms of the license. All warranties given by DS SolidWorks as to the software and documentation are set forth in the license agreement, and nothing stated in, or implied by, this document or its contents shall be considered or deemed a modification or amendment of any terms, including warranties, in the license agreement.

Patent notices

SOLIDWORKS® 3D mechanical CAD and/or Simulation software is protected by U.S. Patents 6,219,049; 6,219,055; 6,611,725; 6,844,877; 6,898,560; 6,906,712; 7,079,990; 7,477,262; 7,558,705; 7,571,079; 7,590,497; 7,643,027; 7,672,822; 7,688,318; 7,694,238; 7,853,940; 8,305,376; 8,581,902; 8,817,028; 8,910,078; 9,129,083; 9,153,072 and foreign patents, (for example, EP 1,116,190B1 and JP 3,517,643).

eDrawings® software is protected by U.S. Patent 7,184,044; U.S. Patent 7,502,027; and Canadian Patent 2,318,706.

U.S. and foreign patents pending.

Trademarks and product names for SOLIDWORKS products and services

SOLIDWORKS, 3D ContentCentral, 3D PartStream.NET, eDrawings, and the eDrawings logo are registered trademarks and FeatureManager is a jointly owned registered trademark of DS SolidWorks.

CircuitWorks, FloXpress, PhotoView360, and TolAnalyst are trademarks of DS SolidWorks.

FeatureWorks is a registered trademark of Geometric Ltd.

SOLIDWORKS 2018, SOLIDWORKS Standard, SOLIDWORKS Professional, SOLIDWORKS Premium, SOLIDWORKS PDM Professional, SOLIDWORKS PDM Standard, SOLIDWORKS Workgroup PDM, SOLIDWORKS Simulation, SOLIDWORKS Flow Simulation, eDrawings, eDrawings Professional, SOLIDWORKS Sustainability, SOLIDWORKS Plastics, SOLIDWORKS Electrical, SOLIDWORKS Composer, and SOLIDWORKS MBD are product names of DS SolidWorks.

Other brand or product names are trademarks or registered trademarks of their respective holders.

COMMERCIAL COMPUTERS SOFTWARE - PROPRIETARY

The Software is a “commercial item” as that term is defined at 48 C.F.R. 2.101 (OCT 1995), consisting of “commercial computer software” and “commercial software documentation” as such terms are used in 48 C.F.R. 12.212 (SEPT 1995) and is provided to the U.S. Government 14 (a) for acquisition by or on behalf of civilian agencies, consistent with the policy set forth in 48 C.F.R. 12.212; or (b) for acquisition by or on behalf of units of the Department of Defense, consistent with the policies set forth in 48 C.F.R. 227.7202-1 (JUN 1995) and 227.7202-4 (JUN 1995).

In the event that you receive a request from any agency of the U.S. Government to provide Software with rights beyond those set forth above, you will notify DS SolidWorks of the scope of the request and DS SolidWorks will have five (5) business days to, in its sole discretion, accept or reject such request. Contractor/Manufacturer: Dassault Systèmes SolidWorks Corporation, 175 Wyman Street, Waltham, Massachusetts 02451 USA.

Copyright notices for SOLIDWORKS PDM Professional product

Outside In ®Viewer Technology, © 1992-2012 Oracle

©2011, Microsoft Corporation. All rights reserved.

Table of Contents

Legal information..... ii

Recommendations..... 5

Supported versions.....6

Platform matrix for Dassault Systèmes SOLIDWORKS PDM Professional
integrations..... 6

What's new in this release.....7

Dassault Systèmes SOLIDWORKS PDM Professional 2024 SP3.0..... 7

Recommendations

Install and test this new version in a development environment before using it in production. The development environment should match the production environment as closely as possible to achieve accurate test results. Any issues or open questions found during testing should be resolved before going to production.

When upgrading an existing integration, make sure that the customer-specific modifications are carefully transferred to the new version. An incomplete upgrade with an incorrect configuration or customization can result in unexpected or deviating behavior, up to and including complete loss of functionality.



Dassault strongly recommends including upgrade services to transfer the existing customer-specific modifications successfully to the new integration version. Contact <https://www.solidworks.com/support/> for an offer.

Supported versions

Platform matrix for Dassault Systèmes SOLIDWORKS PDM Professional integrations

Definition of application version support

- Official support: The version is supported by the latest integration. Issues are fixed immediately.
- Limited support: The version is generally supported by the latest integration, but has not been explicitly tested. Issues are fixed only if they occur in the official versions.

Windows support

Unless otherwise specified, all integrations support Microsoft Windows 10/11 (x64).

Dassault Systèmes SOLIDWORKS PDM Professional

Integration	Official support	Limited support
MCAD	2021-24	2017-20

MCAD integrations

Name	Official support	Limited support
PTC Creo Parametric	7.0-11.0	2.0-6.0

Further integrations on request

What's new in this release

Dassault Systèmes SOLIDWORKS PDM Professional 2024 SP3.0

Important information



This product version uses a new unified installer that is not compatible with older installations that are not based on the unified technology. When you install, the existing installation will be uninstalled completely. See *Admin Guide* and chapter *Updating installation* for more information.

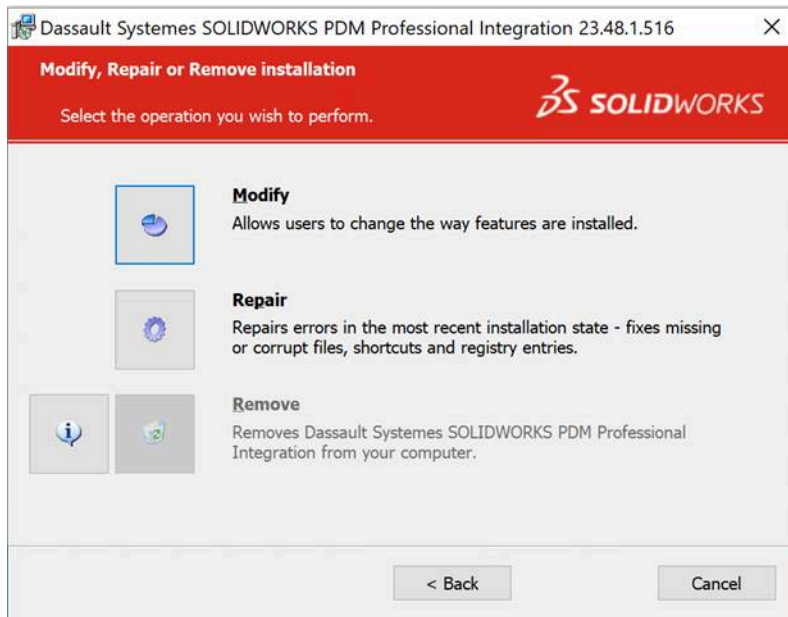
With this unified installer, you can install Dassault products in the same installation directory and use them in parallel. You can update all components individually without affecting the functionality of other installed products.

Known topic

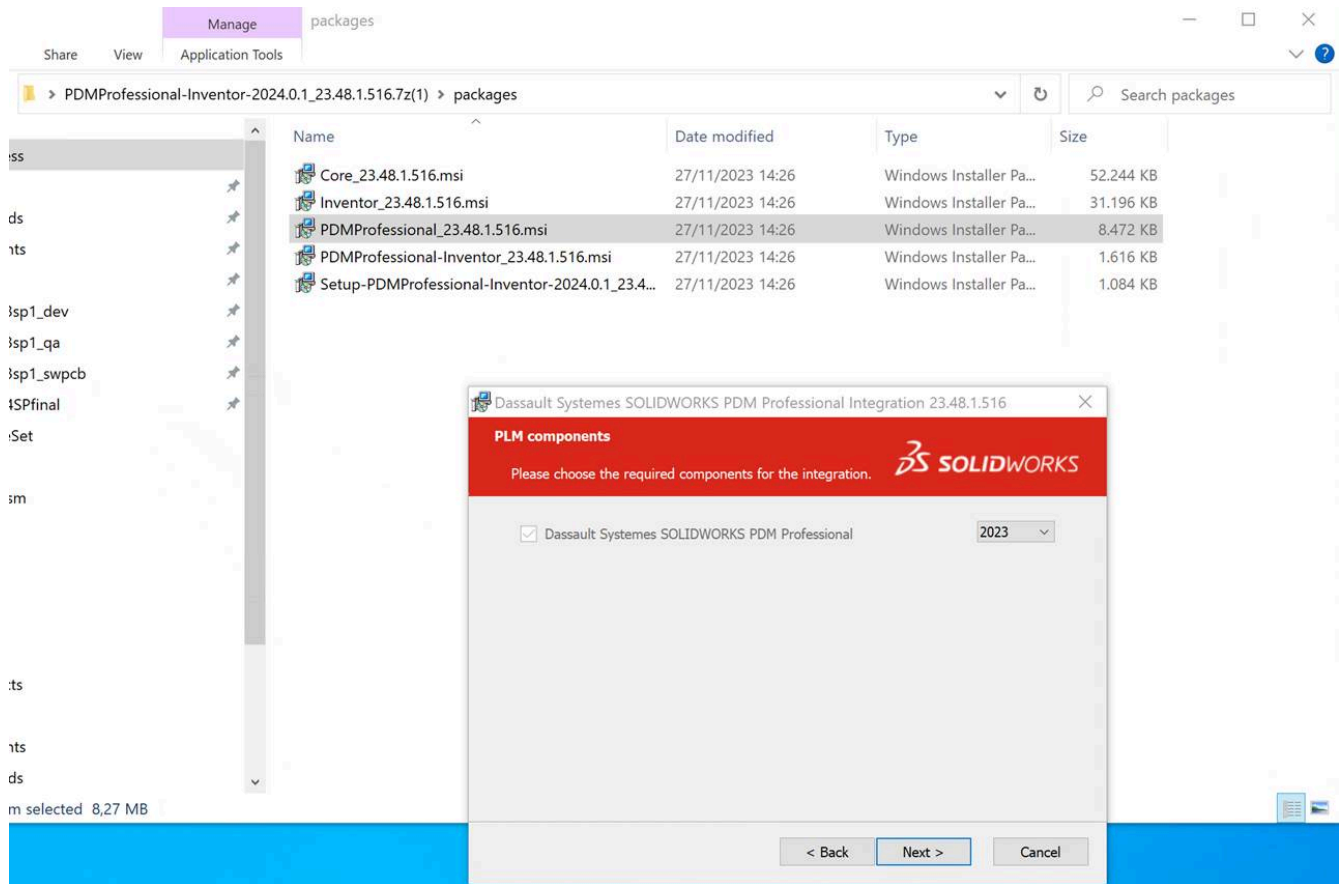
Installation for PDMP 2023 and older environments

After the initial installation on the machine/environment was done, the following things need to be done in addition, otherwise the integration won't work based on a FileFormatPlugin Issue:

Go back to the extracted XPLM Installer folder -> Open the „Packages“ folder -> Run the **PDMPProfessional<cad><version>.msi** file



Click on Modify



Click through the installation until you should choose the corresponding SOLIDWORKS PDM Professional version.

After the installation modification was done. Everything works as expected.

Improvements and fixed Issues

- Support of PTC Creo Parametric 11
- IR-1181109: While save/check in Creo Parametric ASM stuck in Assembly structure is being analyzed - File specific